



THE
Julia
ALLAPATTAH RESIDENCES





THE SUEVA REAL

Artist's conceptual rendering

TABLE OF CONTENTS



INTRODUCTION	4
LOCATION	7
THE JULIA	12
RESIDENCES	21
FLOOR PLANS	25

A GEM IN THE HEART OF ALLAPATTAH, MIAMI

Welcome to The Julia, a revolutionary addition to Allapattah, brought to you by Neology Development, the renowned real estate developer that has redefined urban neighborhoods in South Florida since the early 2000's.

This project reflects their vision of elevating Miami's urban core, bringing attainable luxury living options for the urbanite who wants to have everything the city has to offer at their fingertips.

Neology's aesthetic of clean, modern lines, high-end finishes and a commitment to sustainability and authenticity, make this project one of their most impressive to date.

Artist's conceptual rendering

A TRIBUTE TO THE VISIONARY LEGACY OF JULIA TUTTLE IN THE HEART OF MIAMI

The Julia Residences pays tribute to the influence and determination of Julia Tuttle, the founder of Miami and only woman to have found a major city in the USA, by encapsulating her pioneering spirit and relentless vision for this remarkable city.

This iconic project is strategically located in the heart of Allapattah on NW 20th St. and 17th Ave., and central to everything in Miami.



THE JULIA
RESIDENCES

WHERE ALLAPATTAH LIVING BECOMES EFFORTLESSLY EXTRAORDINARY

Nestled in the heart of Miami, Allapattah is conveniently located to make the most of all Miami has to offer. From diverse dining experiences and cultural events to convenient access to work and leisure opportunities, you're at the epicenter of it all. The rich tapestry of Miami's lifestyle is at your doorstep, allowing you to enjoy the best of urban living.





WELCOME TO THE NEW ALLAPATTAH!

The Julia, located in Allapattah within the health district and surrounded by world-class museums, offers unparalleled convenience and cultural richness. Immerse yourself in the dynamic energy of Allapattah while enjoying the central hub that connects you to the diversity of Miami's cosmopolitan lifestyle.





7 min. from
MIAMI INTERNATIONAL
AIRPORT



10 min. from
DESIGN DISTRICT



5 min. from
WYNWOOD



7 min. from
DOWNTOWN MIAMI



THE JULIA
RESIDENCES

7 mins from
FREEDOM PARK



5 min. from
CALLE 8



3 mins from
U-HEALTH DISTRICT



10 min. from
BRICKELL





THE
Julia
ALLAPATTAN RESIDENCES

THE JULIA RESIDENCES

Artist's conceptual rendering



A MODERN CITY ICON

The Julia Residences stands as a beacon of modern urban living, setting a new standard for chic, city-centric living. The Julia features 323 apartments boasting designer finishes, crafted to exude an elegant vibe with spacious living rooms, modern kitchens, expansive walk-in closets, and floor-to-ceiling windows that flood the interiors with natural light. The Julia offers the perfect fusion of style and substance. This is urban living at its finest, a lifestyle that is both contemporary and accessible.



ELEVATING YOUR LIVING EXPERIENCE



—

This green certified building has all the urban necessities covered, with luscious Zen Garden courtyards to infuse the building with energy, to its iconic Julia Lounge, a clubroom boasting floor-to-ceiling windows with views of Miami's skyline, a full kitchen, bar and lounge areas, including work-spaces and meeting and gathering areas.





Artist's conceptual rendering


A HOST OF EXTRAORDINARY AMENITIES


Imagine starting your day at the state-of-the-art fitness center to invigorate your body and mind, or taking your morning zoom calls in one of the lounge areas thoughtfully designed with you in mind, or finishing your day with a refreshing dip on the rooftop pool as the sun sets on the horizon.



BUILDING AMENITIES

 Luscious Zen Garden courtyards

 Pet Friendly building with pet run and grooming station


 Rooftop deck pool

 Resort style cabanas

 Grill and bbq

 Outdoor summer kitchen with dining area

 Kid's play area

 State-of-the-art fitness center

 Clubroom





BUILDING FEATURES



GROUND FLOOR

- Sophisticated access controlled lobby
- Lounge with co-working & focus rooms
- On site professional management
- Virtual concierge app
- Smart package room
- Bike storage
- 14,000 sq.ft. retail space
- Gated on-site garage parking



PET FRIENDLY

- Pet friendly building
- Pet run
- Pet spa with grooming station



SKYDECK

- Heated rooftop pool
- Resort style cabanas
- Grill area
- Summer kitchen with dining area
- Recreational outdoor deck areas
- Children's play area



FITNESS CENTER

- Cutting-edge exercise equipment
- Cardio training area
- Strength training area
- Virtual fitness studio
- Indoor cycling facilities
- Yoga and meditation space



THE JULIA LOUNGE

- Expansive skyline views
- 4,000 sq.ft. lounge designed for entertaining & daily living
- Chef's kitchen
- Bar with seating for 12
- Lounge seating throughout
- Outdoor area with pool table and seating

**All common areas have WiFi throughout*

RESIDENCES



ELEVATED COMFORT, LUXURY AT YOUR REACH

Each apartment is thoughtfully crafted to offer both style and functionality. With spacious layouts, each apartment provides ample room to make your mark and call it home.

Expansive walk-in closets provide generous storage space, and floor-to-ceiling windows flood the interiors with natural light. The Julia Residences merges modern aesthetics with comfort, making it an ideal destination for those seeking a stylish, yet practical, place to live in the heart of Miami.





TYPES OF RESIDENCES

Our residences are designed with your lifestyle in mind, crafted to provide you with a welcoming and functional space you'll be proud to call home.

1 BED / 1 BATH

575 Sq.Ft. to 694 Sq.Ft.

2 BED / 2 BATH

845 Sq.Ft. to 957 Sq.Ft.



RESIDENCE FEATURES

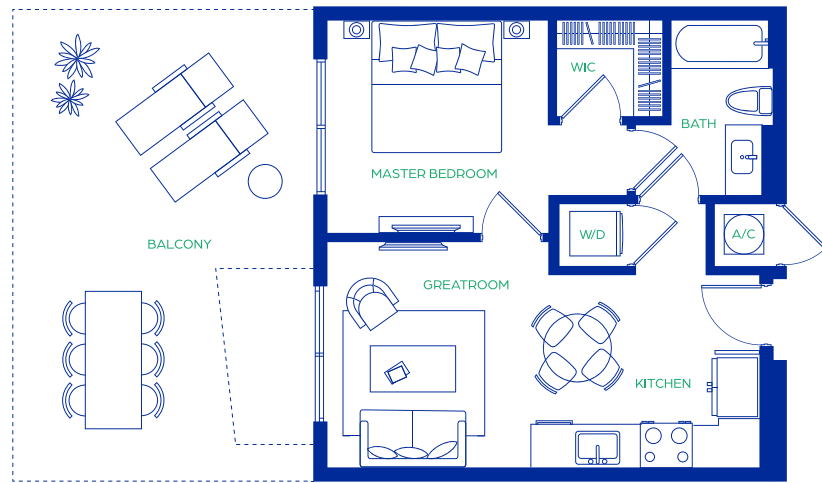


Artist's conceptual rendering

- Expansive skyline and sunset views
- Private terrace on select units
- Floor-to-ceiling windows
- Elegant designer fixtures
- Wood laminate flooring
- Balcony on every unit
- Stainless steel appliances
- European inspired cabinets
- Glass enclosed showers
- Walk-in closets
- 9-12 foot ceilings
- Quartz countertops
- In-unit washer and dryer

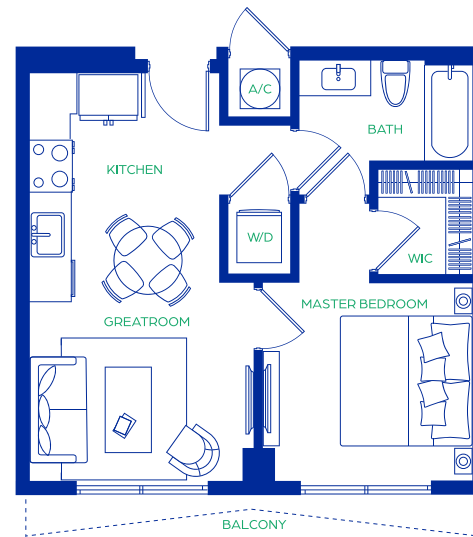
RESIDENCE TYPE A

1 Bedroom / 1 Bathroom



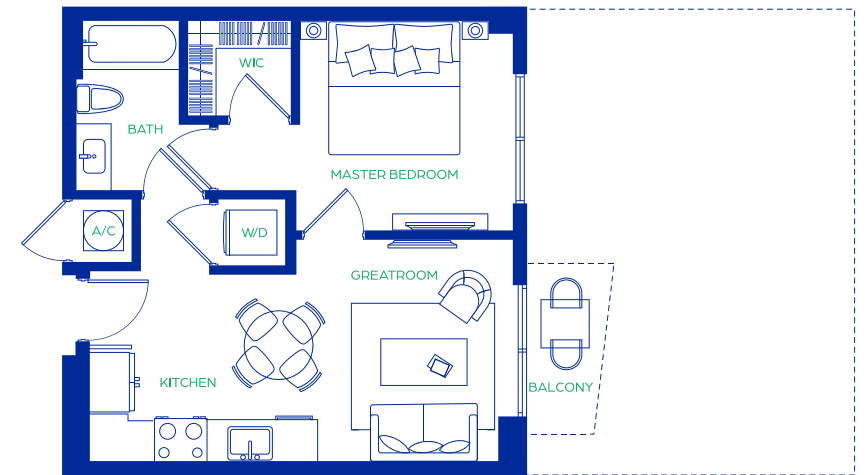
A1

Interior: 575 Sq.Ft.
Balcony: from 31 Sq.Ft. to 38 Sq.Ft.



A2

Interior: 589 Sq.Ft.
Balcony: from 51 Sq.Ft. to 66 Sq.Ft.



A3

Interior: 573 Sq.Ft.
Balcony: from 38 Sq.Ft. to 377 Sq.Ft.

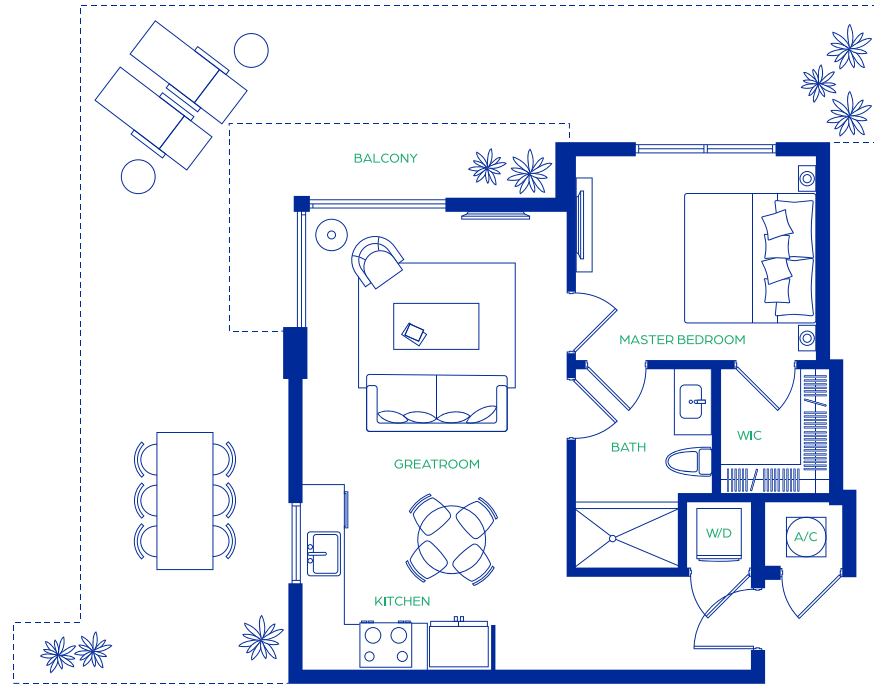
RESIDENCE TYPE A

1 Bedroom / 1 Bathroom



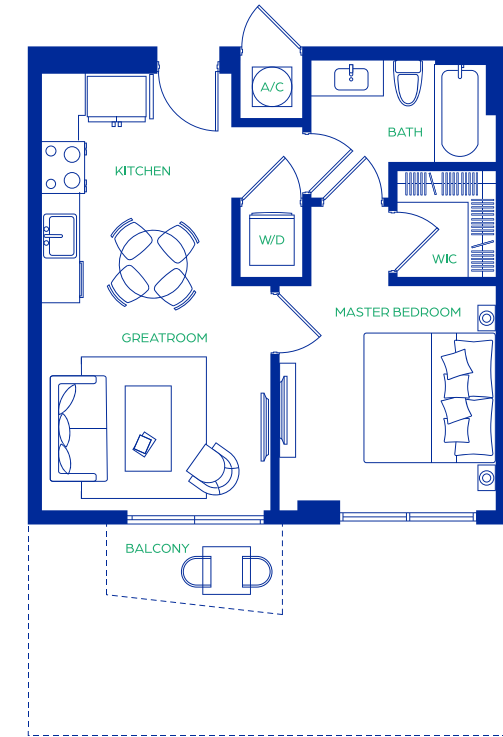
A4

Interior: 667 Sq.Ft.
Balcony: from 38 Sq.Ft. to 207 Sq.Ft.



A5

Interior: 694 Sq.Ft.
Balcony: from 87 Sq.Ft. to 516 Sq.Ft.



A7

Interior: 575 Sq.Ft.
Balcony: from 38 Sq.Ft. to 234 Sq.Ft.

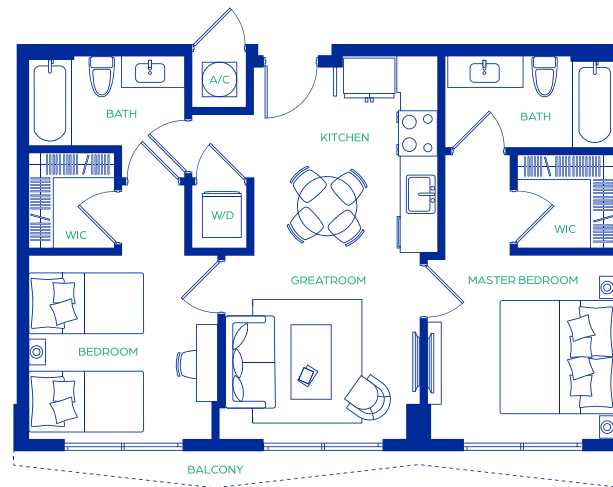
RESIDENCE TYPE B

2 Bedroom / 2 Bathroom



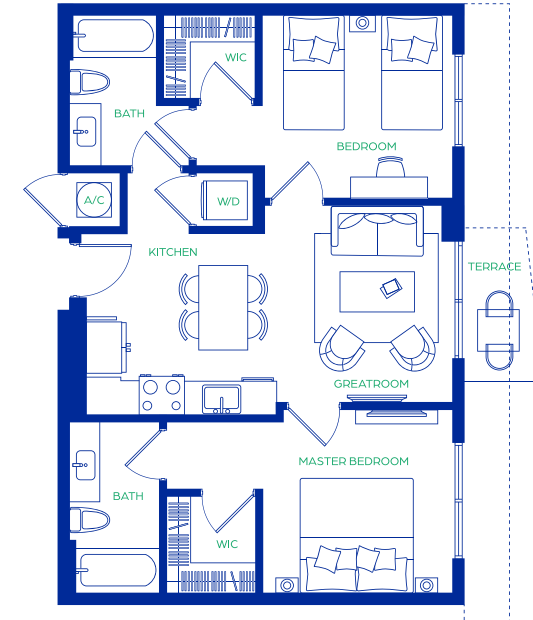
B1

Interior: 845 Sq.Ft.
Balcony: from 38 to 578 Sq.Ft.



B2

Interior: 866 Sq.Ft.
Balcony: from 75 to 95 Sq.Ft.

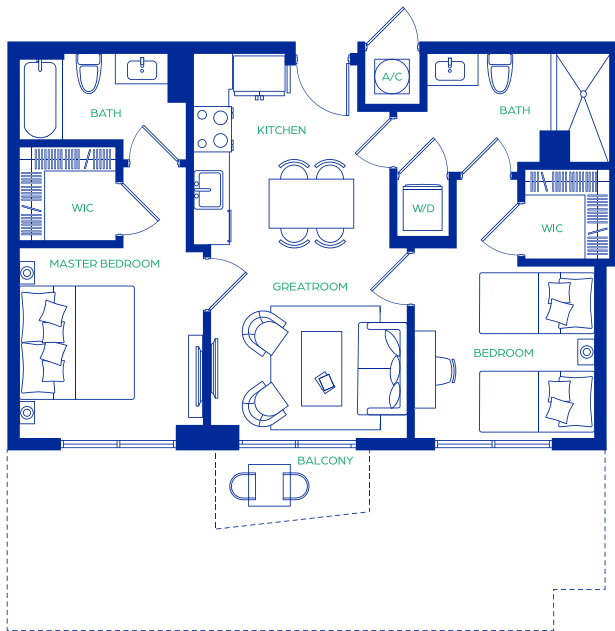


B3

Interior: 852 Sq.Ft.
Balcony: from 31 to 97 Sq.Ft.

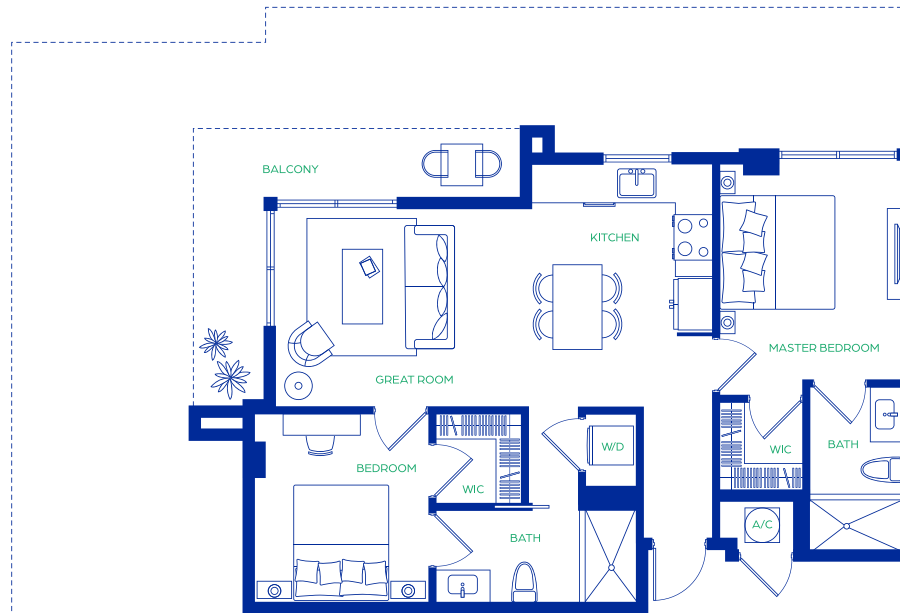
RESIDENCE TYPE B

2 Bedroom / 2 Bathroom



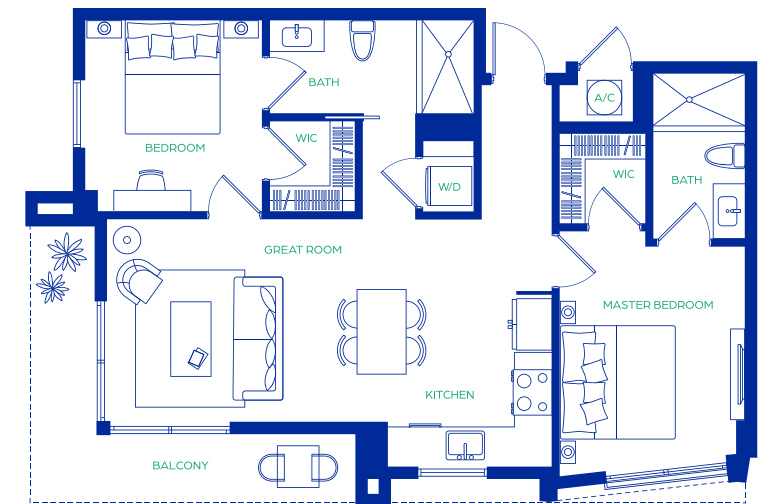
B4

Interior: 870 Sq.Ft.
Balcony: from 38 to 338 Sq.Ft.



B5

Interior: 951 Sq.Ft.
Balcony: from 127 to 938 Sq.Ft.

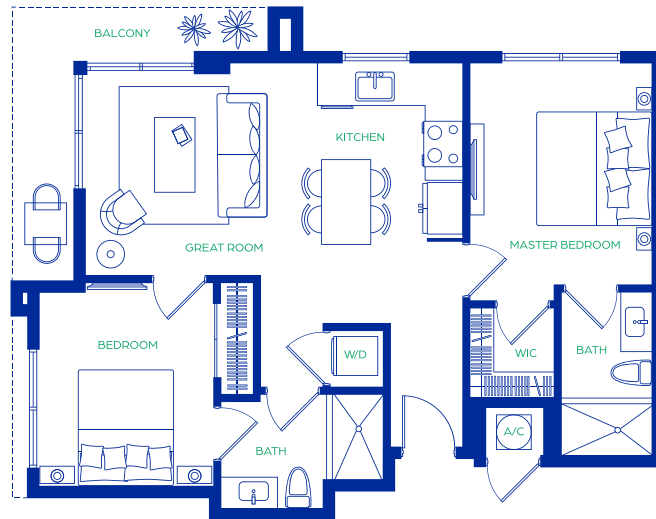


B6

Interior: 957 Sq.Ft.
Balcony: from 127 to 180 Sq.Ft.

RESIDENCE TYPE B

2 Bedroom / 2 Bathroom



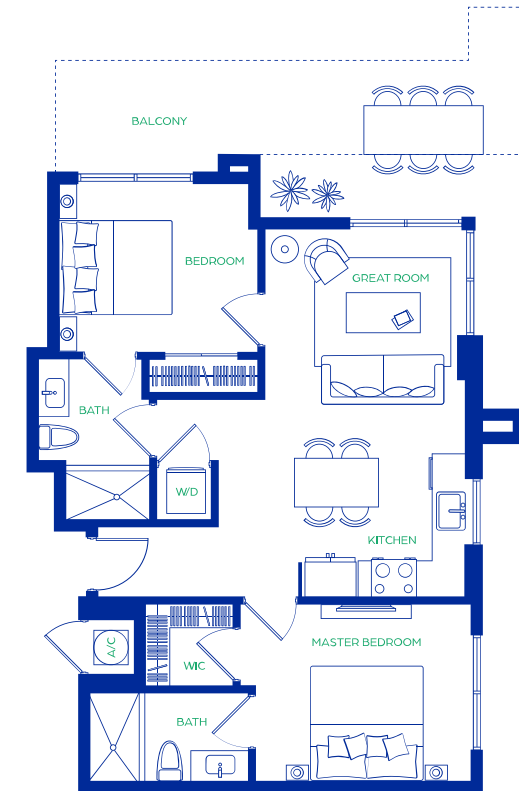
B7

Interior: 914 Sq.Ft.
Balcony: from 114 to 165 Sq.Ft.



B8

Interior: 875 Sq.Ft.
Balcony: from 38 to 342 Sq.Ft.



B9

Interior: 957 Sq.Ft.
Balcony: from 127 to 180 Sq.Ft.

